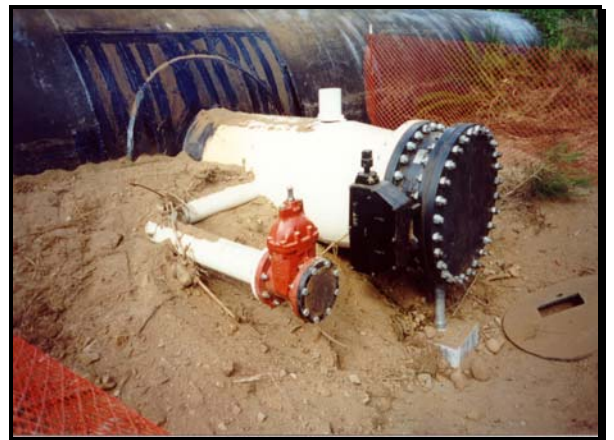


BC HYDRO PENSTOCK TIE-IN COMOX VALLEY WATER SUPPLY COMOX-STRATHCONA REGIONAL DISTRICT

The work involved the connection of a 900 mm diameter, 19 mm thick, steel nozzle assembly to the existing 3243 mm diameter, 21 mm thick, steel penstock.

This connection will be the future supply point for the Comox Valley water supply system.



**KOERS
& ASSOCIATES
ENGINEERING LTD.**
Consulting Engineers